

Internasionaal

Australia set to harvest bigger crops after rains defy El Nino

By Peter Hobson

January 23, 2024 7:41 AM GMT+2 · Updated 7 hours ago



- Meer koring as verwag
- Meer reën ontvang as verwag met El Nino
- Baie droë Aug tot Okt het die mark onseker gelaat oor opbrengs
- Die waarde van die addisionele koring, gars, kanola, sorghum en katoen wat nou kan realiseer, word geskat op \$2.5 miljard
- Koring – 30mmt teenoor 24mmt wat die mark verwag het.

USDA confirms first big US soy sale to China since mid-December

Reuters

January 19, 2024 5:49 PM GMT+2 · Updated 4 days ago



- Die eerste soyabone vir die jaar het China bereik. Daar is 297 000t uitgevoer.
- Soyas bly onder druk weens n beter uitkyk op Brasiliaanse weer
- Ten spyte van goeie reën, is produksie nog n onsekerheid
- Brasilie gaan ongeveer \$1.5/bu goedkoper in die mark wees as VSA voorraad
- China het 20.2mmt Soyas by die VSA geboek teenoor die 27.2mmt van verlede jaar
- China se totale invoere is wel 1.15mmt meer (102mmt huidiglik), goedkoper Brasiliaanse voorraad sal gebruik word

India's corn exports plunge as local prices rally on strong demand

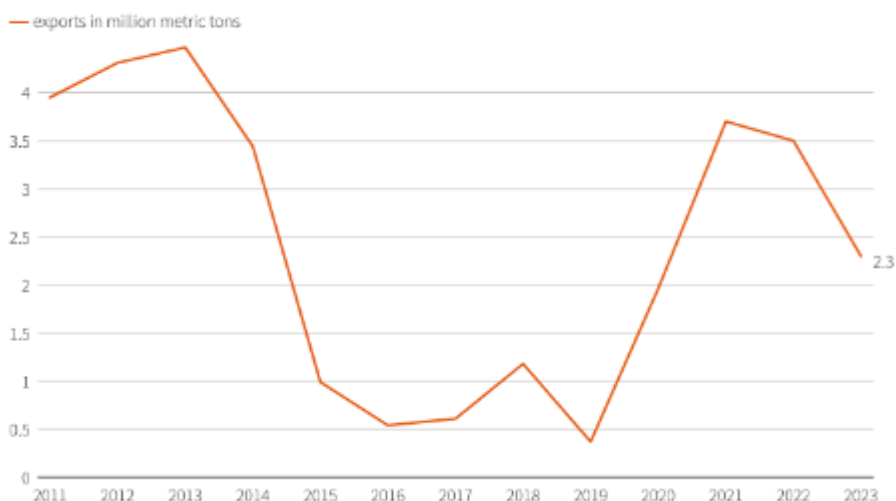
By Rajendra Jadhav

January 18, 2024 11:55 AM GMT+2 · Updated 5 days ago

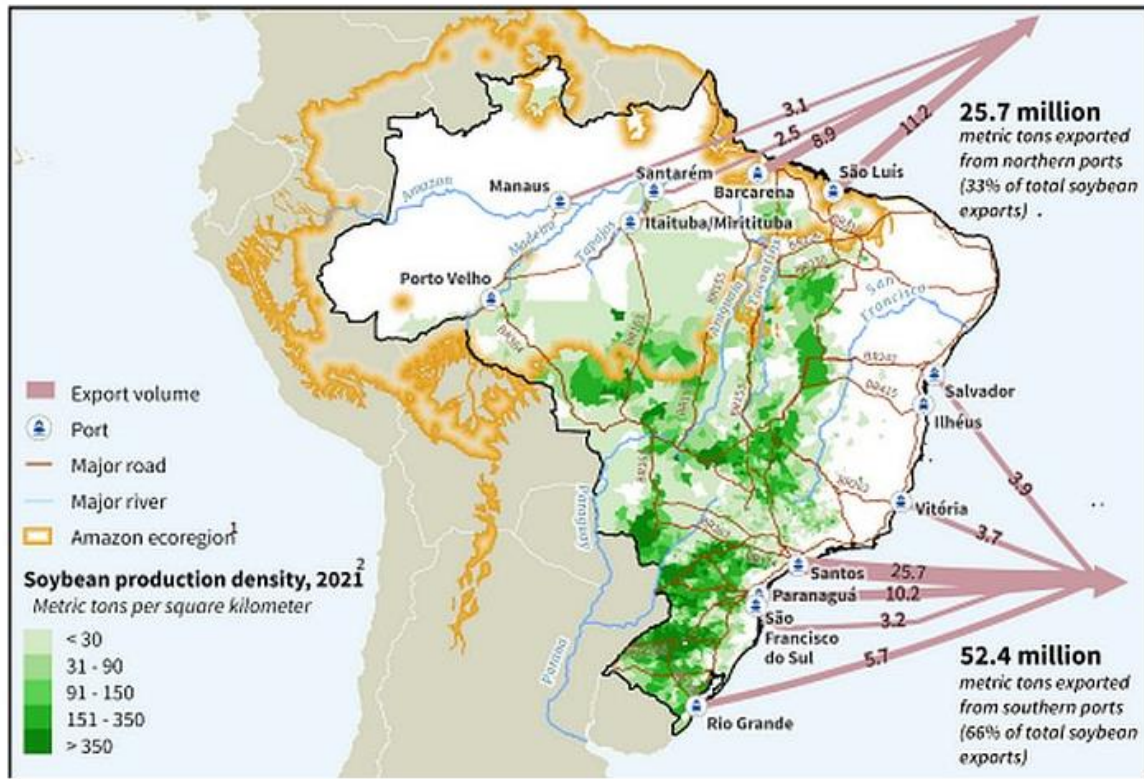


- Indie uitvoer syfers staan gewoonlik op 250 000 – 300 000t/maand
- Desember uitvoere staan op 30 000t
- Sterk aankope vanuit die pluimfee en ethanol industrie gee baie ondersteuning binneland

India's corn exports plunge



Brasile uitvoere



2022

Plaaslik

YM Parities

BVG Commodities (Pty) Ltd

Your partner in risk management

Morning Graphs Parities 23/01/2024

MORNING GRAPHS & PARITIES

23 January 2024



Report compile at:
05:00AM

CHANGES INTERNATIONAL SINCE 12PM PREVIOUS TRADING DAY

	12:00	05:00AM	Change
ECONOMIC INDICATORS			
ZAR/\$	19.1623	19.1375	-0.0248
EUR/USD	1.08956	1.08861	-0.0010
GOLD \$	2 021.28	2 022.49	1.2100
PLATINUM	896.378	899.078	2.7000
LIGHT CRUDE OIL	73.19	74.7	1.5100
ALSI SEPT 2023	66523	66675	152.0000

	12:00	05:00AM	Change
USA INDEX CHANGE			
US MAIZE MAR 24	3 360	3 357	-2
US SOYA MAR 24	8 532	8 604	72
US KANS WEAT MAR 24	4 246	4 271	25
US CME WEAT MAR 24	4 154	4 195	40

SPOT PRICE \$/t			
ARG CORN	193.25	193.75	0.50
BRAZIL CORN	198.75	199.25	0.50
ARG WEAT	237.00	237.00	0.00
GERMANY WEAT	248.50	244.25	-4.25
RUSSIAN WEAT	241.00	241.00	0.00
ARG SOY	426.00	428.25	2.25
BRAZIL SOY	430.25	430.75	0.50
FRENCH SUNS	451.00	451.00	0.00
BLACK SEA SUNS	450.00	450.00	0.00

FREIGHT \$/t Weekly change on Fridays			
US GOLF	56	45	-11
ARGENTINE	41	32	-9
BRAZIL	33	24	-9
BLACK SEE	62	51	-11
EUROPE	50	40	-10

MAIZE REPORT

MAIZE TRADING ON EXPORT PARITY		
UNUTILISED STOCK ON END OF OCT 23	WMAZ	4 584 702.00
	YMAZ	4 525 727.00

EXPORT OF SOUTH AFRICAN MAIZE		MARKETING YEAR TOTAL EXPORTS
WMAZ		612 902.00
YMAZ		1 792 737.00

MAIZE INTERNATIONAL PRICES & PARITIES				YMAZ	SAFEX to
IMPORT PARITIES YM	12:00	05:00AM	Change	SAFEX	Import
CORN MAR 24	5301	5299	(R1)	3653	(R1 648)
CORN JUL 24	5434	5440	R6	3690	(R1 744)
ARG YMAZ	4900	4906	R7	3668	(R1 232)
BRAZIL CORN	4871	4878	R7	3668	(R1 203)

EXPORT PARTIES				
	MAR 24	JUL 24	SEP 24	DEC 24
US GULF (DURBAN)	R3 385	R3 511	R3 597	R3 652
SAFEX YMAZ	R3 653	R3 690	R3 776	R3 860
SAFEX TO EXPORT	R268	R179	R179	R208

	MAR 24	JUL 24	SEP 23	DEC 24
WMAZ/CORN SPREAD	-448	-232		-299
WMAZ/YMAZ SPLIT	-170	-85	-68	-94
YMAZ/CORN SPREAD	-278	-147		-205

US CORN C/BUSHEL				
	MAR 24	JUL 24	SEP 24	DEC 24
12:00 PREV DAY	445.25	463.50	468.00	475.00
05:00AM	445.50	464.75	468.75	476.00
CHANGE	0.25	1.25	0.75	1.00
US Prem GULF c/bu	58.00	52.00	54.00	54.00
Live	58.00	52.00	54.00	54.00
Change	0.00	0.00	0.00	0.00
US FOB \$/t GULF	198.15	202.98	205.54	208.39
LIVE	198.25	203.47	205.83	208.69
Change	0.10	0.49	0.30	0.30

Koring

WHEAT – AREA PLANTED AND FIFTH PRODUCTION FORECAST: 2023

KORING – OPPERVLAKTE- EN VYFDE PRODUKSIESKATTING: 2023

Province/ Provinsie	Area planted/ Opp beplant Ha 2023	5 th forecast/ 5 ^{de} skatting Tons 2023	Area planted/ Opp beplant Ha 2022	Final crop/ Finale oes Tons 2022
Western Cape/Wes-Kaap	365 000	1 131 500	360 000	918 000
Northern Cape/Noord-Kaap	40 000	310 000	47 000	338 500
Free State/Vrystaat	72 000	309 600	96 000	436 800
Eastern Cape/Oos-Kaap	6 300	40 950	6 000	40 200
KwaZulu-Natal	8 500	56 950	9 200	60 730
Mpumalanga	4 200	28 560	4 000	27 600
Limpopo	30 000	199 500	29 000	187 000
Gauteng	950	6 365	1 100	7 370
North West/Noordwes	11 000	68 200	14 500	93 800
Total/Totaal	537 950	2 151 625	566 800	2 110 000



WHEAT: WEEKLY PRODUCER DELIVERIES

		2023/2024 Season Progressive: 2023/09/30 - 2024/01/12				Comparison with Previous Year	
Week	Week Ending	Prod. Deliveries	Adjustments	Week Total	Prog. Total	% Change from Previous Year	Prog. Total 2022 / 2023
		Ton					
7	11/11 - 17/11/2023	342,449	6,584	349,033	840,409	- .71	846,397
8	18/11 - 24/11/2023	247,903	7,507	255,410	1,095,819	.15	1,094,164
9	25/11 - 01/12/2023	252,554	938	253,492	1,349,311	1.48	1,329,588
10	02/12 - 08/12/2023	257,151	7,062	264,213	1,613,524	.92	1,598,738
11	09/12 - 15/12/2023	76,173	4,788	80,961	1,694,485	2.41	1,654,652
12	16/12 - 22/12/2023	35,799	2,284	38,083	1,732,568	1.8	1,701,885
13	23/12 - 29/12/2023	6,643	88	6,731	1,739,299	1.49	1,713,740
14	30/12 - 05/01/2024	15,904	540	16,444	1,755,743	1.21	1,734,716
15	06/01 - 12/01/2024	17,092	0	17,092	1,772,835	-.05	1,773,794